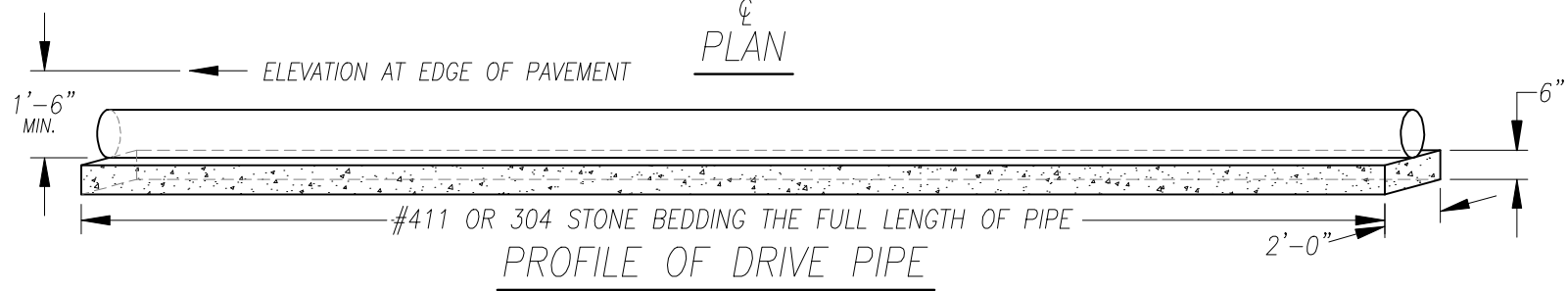


NOTES: ROADSIDE DITCH SHALL NOT BE FILLED IN. SURFACE OF DRIVEWAY MUST FOLLOW EXISTING GROUND CONTOUR AND MAINTAIN EXISTING GROUND ELEVATION WITHIN ROAD RIGHT-OF-WAY.

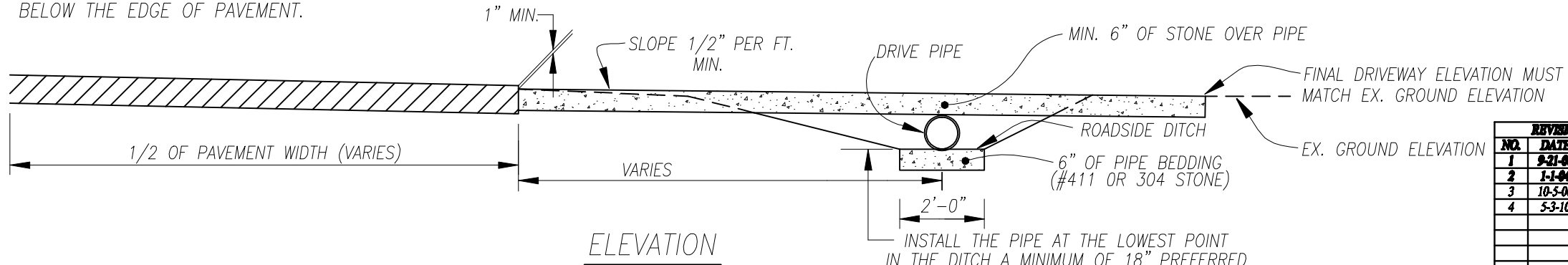
SURFACE OF DRIVEWAY APRON ABUTTING THE ROADWAY MUST BE A MIN. OF 1" BELOW THE EDGE OF PAVEMENT.



NOTES: ONLY ONE DRIVEWAY IS PERMITTED PER PARCEL. ADDITIONAL DRIVES MAY BE ALLOWED PURSUANT TO THE ALLEN COUNTY ACCESS MANAGEMENT REGULATIONS.

FOR CONCRETE DRIVEWAYS SEE STANDARD DRAWING DW-1 FOR THICKNESS OF CONCRETE.

DRIVE PIPE MUST BE 4 FT. PAST EACH SIDE OF DRIVEWAY REGARDLESS OF PIPE PLACEMENT IN THE DRIVEWAY.



REVISIONS			ALLEN COUNTY, OHIO	
NO.	DATE	BY	COUNTY ENGINEER	
1	9-21-00	BJT	<b>MINIMUM DRAINAGE &amp; DRIVEWAY STANDARDS</b> <b>COMMERCIAL DRIVES</b> <b>STANDARD CONSTRUCTION DRAWING DW-3</b> <b>DRAWN BY: BJT   APPROVED BY: T.J. PIPER</b>	
2	1-1-04	DRL		
3	10-5-06	ZJG		
4	5-3-10	DRL		