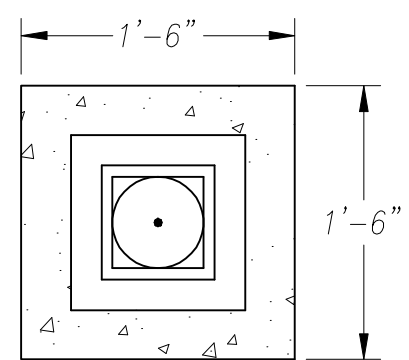


**PLAN**

DRILLED SHAFT

NOTE:

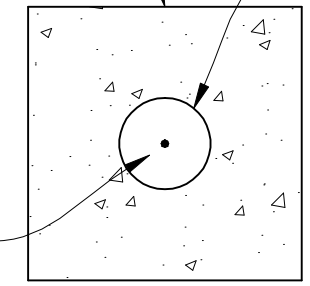
MONUMENT BOXES PLACED AT LOCATIONS NEEDED TO RE-ESTABLISH ALL STREETS AND WITHIN CLEAR SIGHT OF PREVIOUS BOX SET.



**PLAN**

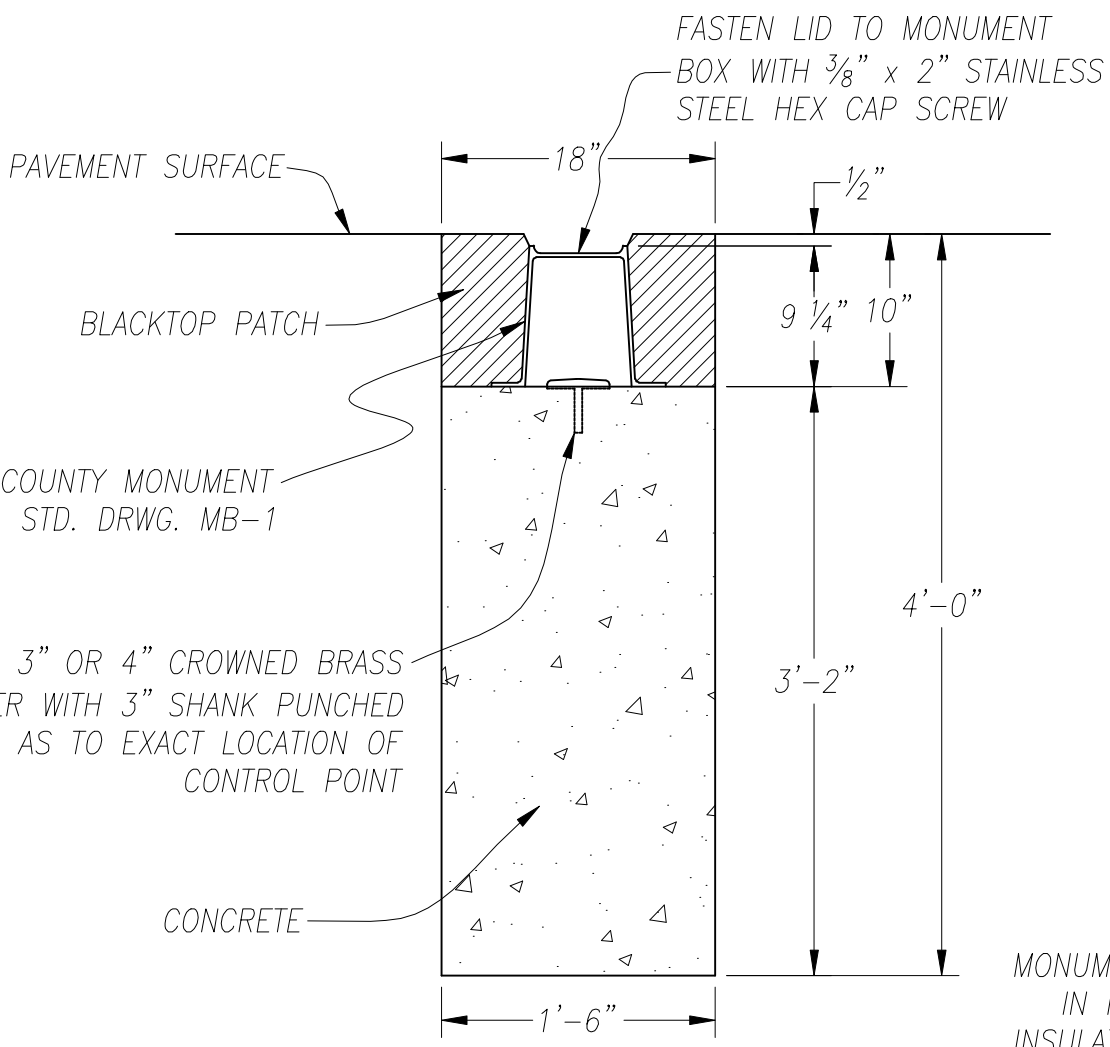
6" DIA. PRECAST CONCRETE MONUMENT OR 6" PIPE (706.07 OR 706.09) FILLED WITH CONCRETE SAND COMPACTED BY FLOODING. BOTH WRAPPED IN NON-BONDING INSULATION MATERIAL.

CLASS "C" CONCRETE

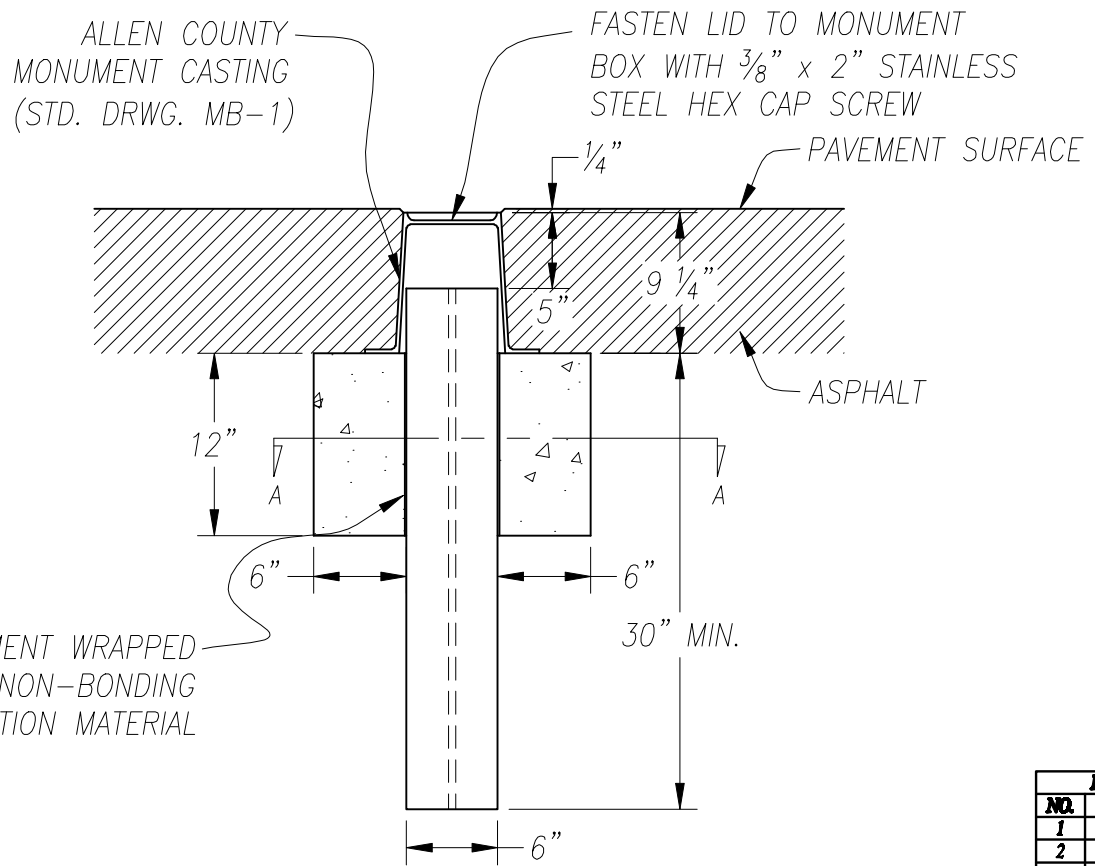


**SECTION A-A**

CLASS "C" CONCRETE



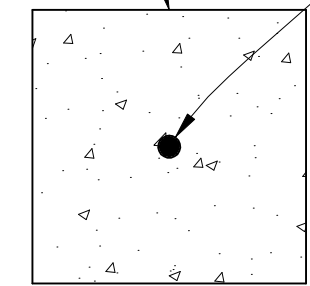
**ELEVATION  
DESIGN ALTERNATIVE  
WITHIN SUBDIVISIONS**



**ELEVATION**

1 1/4" x 48" STEEL ROD WRAPPED IN 1/8" NON-BONDING INSULATION MATERIAL AND EXTENDING 4 1/4" INTO MONUMENT BOX

CLASS "C" CONCRETE



**ALTERNATE SECTION A-A**

MONUMENT WRAPPED IN NON-BONDING INSULATION MATERIAL

| REVISIONS |         |     | ALLEN COUNTY, OHIO  |  |
|-----------|---------|-----|---|--|
| NO.       | DATE    | BY  | COUNTY ENGINEER   |  |
| 1         | 2-22-00 | B/T | <b>MONUMENT BOX BEDDING<br/>DETAIL FOR SUBDIVISION<br/>MONUMENTATION</b><br>STANDARD CONSTRUCTION DRAWING MB-1-B<br>DRAWN BY: RJM   APPROVED BY: T.J. PIPER |  |
| 2         | 10-5-06 | RJM |   |  |
|           |         |     |   |  |
|           |         |     |   |  |
|           |         |     |   |  |
|           |         |     |   |  |